

# Circle of Fifths

The diagram illustrates the Circle of Fifths with 12 musical staves, each representing a different key signature. The staves are arranged in a circular pattern, with the following key signatures from top to bottom:

- No #/b
- 1 b
- 1 #
- 2 b
- 2 #
- 3 b
- 3 #
- 4 b
- 4 #
- 5 b
- 5 #
- 6 b
- 6 #
- 7 #
- 7 b

Each staff consists of a five-line musical staff with a treble clef and a single note on the middle line (F4). The key signature is indicated by a sharp (#) or flat (b) symbol followed by a number, representing the number of sharps or flats in the key signature.

## RULES

Alternate line, space, line, etc.

(or space, line, space, etc.)

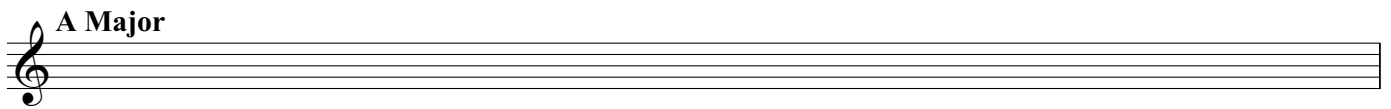
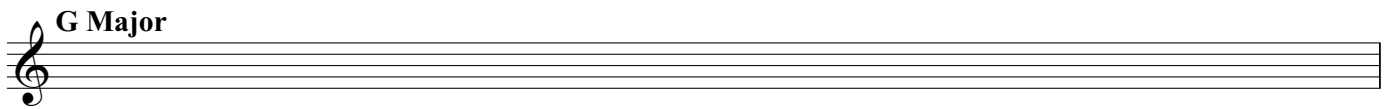
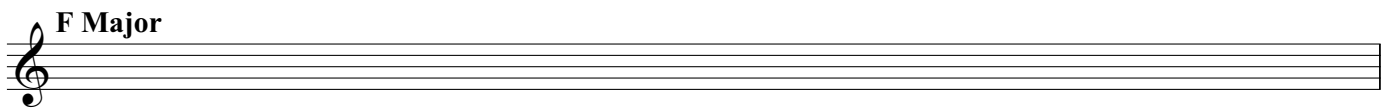
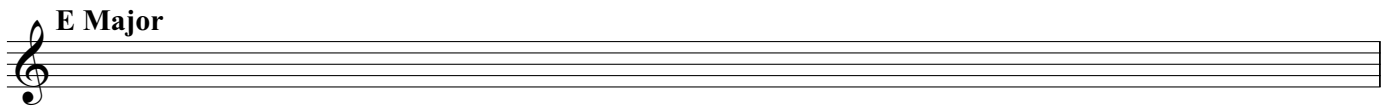
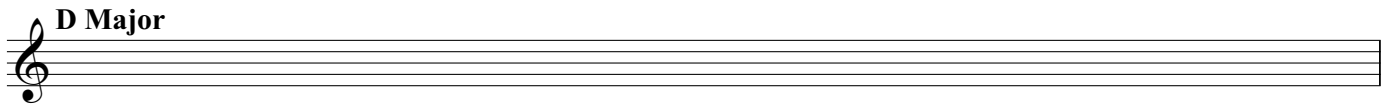
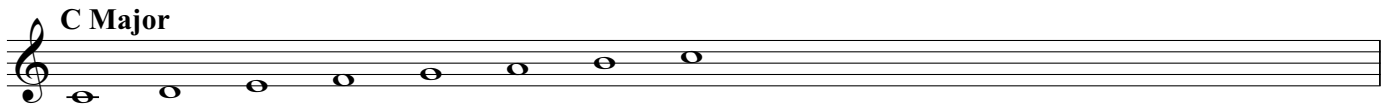
1, 1, 1/2, 1, 1, 1, 1/2 (W, W, H, W, W, W, H)

Start and end on same note

one of every note (no G and G# in the same key)

## Major Scales


W,W,H,W,W,W,H



# Major Pentatonic Scales

Remove the 4th and 7th Scale Degrees of the Major Scale

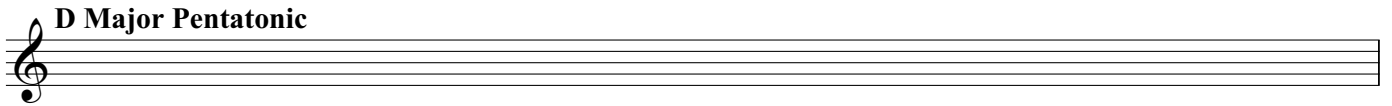
**C Major Pentatonic**

A single musical staff in treble clef showing the C Major Pentatonic scale. The notes are C, D, E, G, and A, written as half notes on a five-line staff.

**C# Major Pentatonic**                      **D<sup>b</sup> Major Pentatonic**

Two musical staves in treble clef. The first staff shows the C# Major Pentatonic scale (C#, D#, E, G, A) and the second staff shows the D<sup>b</sup> Major Pentatonic scale (D<sup>b</sup>, E<sup>b</sup>, F, G, A).

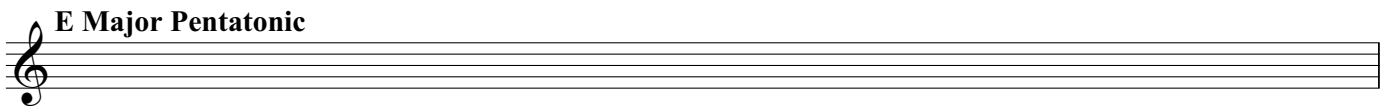
**D Major Pentatonic**

A single musical staff in treble clef showing the D Major Pentatonic scale. The notes are D, E, F#, G, and A, written as half notes on a five-line staff.

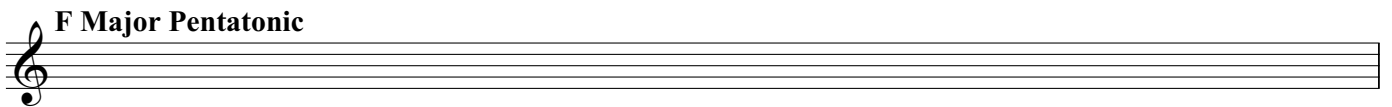
**D# Major Pentatonic**                      **E<sup>b</sup> Major Pentatonic**

Two musical staves in treble clef. The first staff shows the D# Major Pentatonic scale (D#, E, F#, G, A) and the second staff shows the E<sup>b</sup> Major Pentatonic scale (E<sup>b</sup>, F, G, A, B).

**E Major Pentatonic**

A single musical staff in treble clef showing the E Major Pentatonic scale. The notes are E, F#, G, B, and C, written as half notes on a five-line staff.

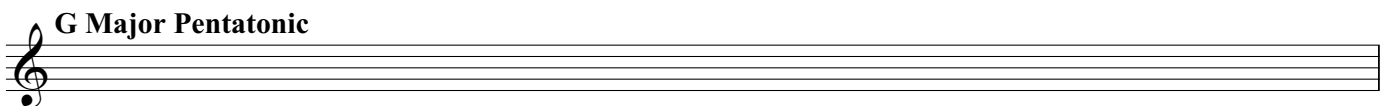
**F Major Pentatonic**

A single musical staff in treble clef showing the F Major Pentatonic scale. The notes are F, G, A, C, and D, written as half notes on a five-line staff.

**F# Major Pentatonic**                      **G<sup>b</sup> Major Pentatonic**

Two musical staves in treble clef. The first staff shows the F# Major Pentatonic scale (F#, G, A, B, C) and the second staff shows the G<sup>b</sup> Major Pentatonic scale (G<sup>b</sup>, A, B, C, D).

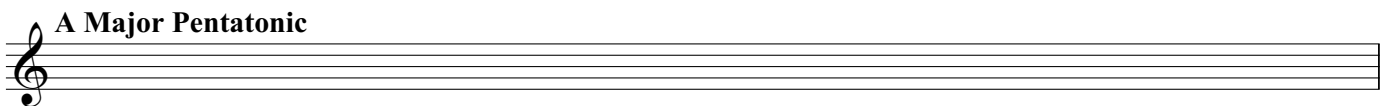
**G Major Pentatonic**

A single musical staff in treble clef showing the G Major Pentatonic scale. The notes are G, A, B, D, and E, written as half notes on a five-line staff.

**G# Major Pentatonic**                      **A<sup>b</sup> Major Pentatonic**

Two musical staves in treble clef. The first staff shows the G# Major Pentatonic scale (G#, A, B, C, D) and the second staff shows the A<sup>b</sup> Major Pentatonic scale (A<sup>b</sup>, B, C, D, E).

**A Major Pentatonic**

A single musical staff in treble clef showing the A Major Pentatonic scale. The notes are A, B, C, E, and F, written as half notes on a five-line staff.

**A# Major Pentatonic**                      **B<sup>b</sup> Major Pentatonic**

Two musical staves in treble clef. The first staff shows the A# Major Pentatonic scale (A#, B, C, E, F) and the second staff shows the B<sup>b</sup> Major Pentatonic scale (B<sup>b</sup>, C, D, E, F).

**B Major Pentatonic**                      **C<sup>b</sup> Major Pentatonic**

Two musical staves in treble clef. The first staff shows the B Major Pentatonic scale (B, C, D, F, G) and the second staff shows the C<sup>b</sup> Major Pentatonic scale (C<sup>b</sup>, D, E, F, G).

# Relative Natural Minor Scales

Start and End on the 6th Scale Degree of a Major Scale (using the same key signature)

**A Natural Minor**

**A# Natural Minor**                      **Bb Natural Minor**

**B Natural Minor**

**B# Natural Minor**                      **C Natural Minor**

**C# Natural Minor**

**D Natural Minor**

**D# Natural Minor**                      **Eb Natural Minor**

**E Natural Minor**

**E# Natural Minor**                      **F Natural Minor**

**F# Natural Minor**


**Fx Natural Minor**                      **G Natural Minor**

**G# Natural Minor**                      **Ab Natural Minor**

# Relative Minor Pentatonic Scales

Remove the 2nd and 6th Scale Degrees of the Natural Minor Scale

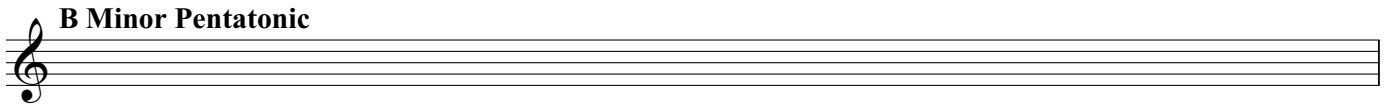
**A Minor Pentatonic**

A musical staff in treble clef showing the A minor pentatonic scale. The notes are A2, C3, D3, E3, and F3, all written as half notes.

**A# Minor Pentatonic** | **Bb Minor Pentatonic**

Two musical staves in treble clef. The first staff shows the A# minor pentatonic scale (A#, C, D, E, F) and the second staff shows the Bb minor pentatonic scale (Bb, C, D, E, F), both as half notes.

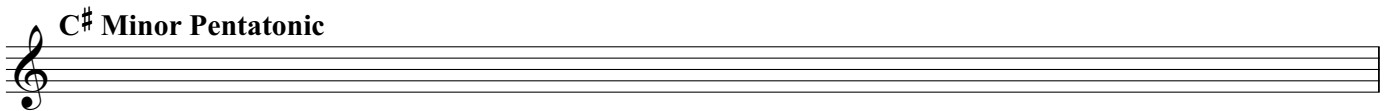
**B Minor Pentatonic**

A musical staff in treble clef showing the B minor pentatonic scale (B, C, D, E, F) as half notes.

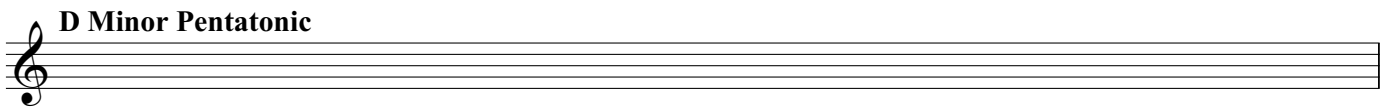
**B# Minor Pentatonic** | **C Minor Pentatonic**

Two musical staves in treble clef. The first staff shows the B# minor pentatonic scale (B#, C, D, E, F) and the second staff shows the C minor pentatonic scale (C, D, E, F, G) as half notes.

**C# Minor Pentatonic**

A musical staff in treble clef showing the C# minor pentatonic scale (C#, D, E, F, G) as half notes.

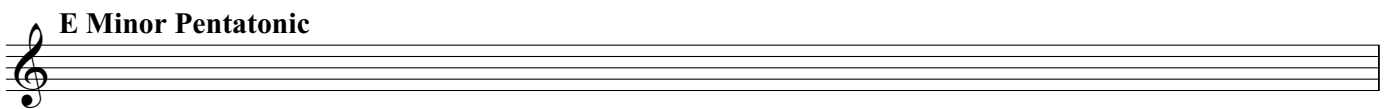
**D Minor Pentatonic**

A musical staff in treble clef showing the D minor pentatonic scale (D, E, F, G, A) as half notes.

**D# Minor Pentatonic** | **Eb Minor Pentatonic**

Two musical staves in treble clef. The first staff shows the D# minor pentatonic scale (D#, E, F, G, A) and the second staff shows the Eb minor pentatonic scale (Eb, F, G, A, Bb) as half notes.

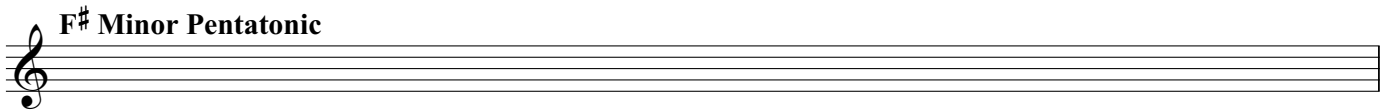
**E Minor Pentatonic**

A musical staff in treble clef showing the E minor pentatonic scale (E, F, G, A, B) as half notes.

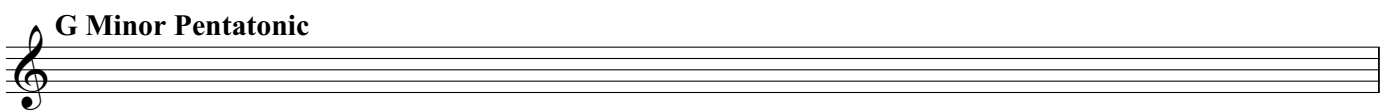
**E# Minor Pentatonic** | **F Minor Pentatonic**

Two musical staves in treble clef. The first staff shows the E# minor pentatonic scale (E#, F, G, A, B) and the second staff shows the F minor pentatonic scale (F, G, A, B, C) as half notes.

**F# Minor Pentatonic**

A musical staff in treble clef showing the F# minor pentatonic scale (F#, G, A, B, C) as half notes.

**G Minor Pentatonic**

A musical staff in treble clef showing the G minor pentatonic scale (G, A, B, C, D) as half notes.

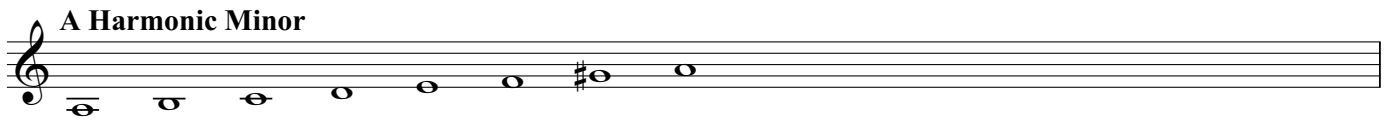
**G# Minor Pentatonic** | **Ab Minor Pentatonic**

Two musical staves in treble clef. The first staff shows the G# minor pentatonic scale (G#, A, B, C, D) and the second staff shows the Ab minor pentatonic scale (Ab, B, C, D, E) as half notes.

# Relative Harmonic Minor Scales

The Natural Minor Scale with a Raised 7th Scale Degree

**A Harmonic Minor**



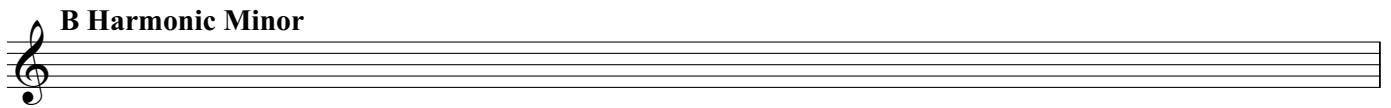
A musical staff in treble clef showing the A Harmonic Minor scale. The notes are A2, B2, C3, D3, E3, F3, G#3, and A3, all written as half notes.

**A# Harmonic Minor** | **Bb Harmonic Minor**



Two musical staves in treble clef. The first staff is for A# Harmonic Minor and the second is for Bb Harmonic Minor. Both scales are shown as empty staves with a treble clef and a bar line between them.

**B Harmonic Minor**



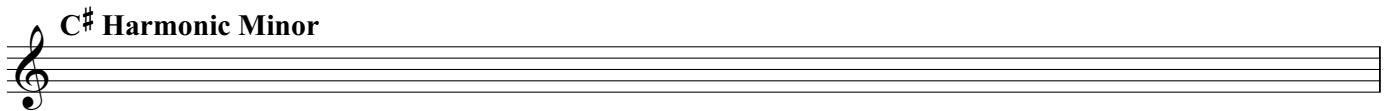
A musical staff in treble clef for the B Harmonic Minor scale, shown as an empty staff with a treble clef.

**B# Harmonic Minor** | **C Harmonic Minor**



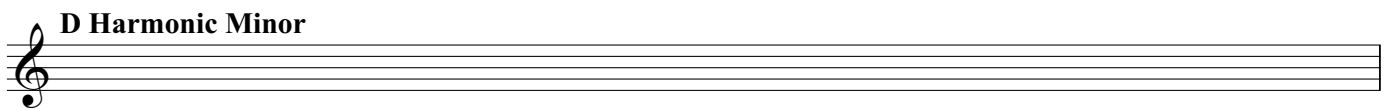
Two musical staves in treble clef. The first staff is for B# Harmonic Minor and the second is for C Harmonic Minor. Both scales are shown as empty staves with a treble clef and a bar line between them.

**C# Harmonic Minor**



A musical staff in treble clef for the C# Harmonic Minor scale, shown as an empty staff with a treble clef.

**D Harmonic Minor**



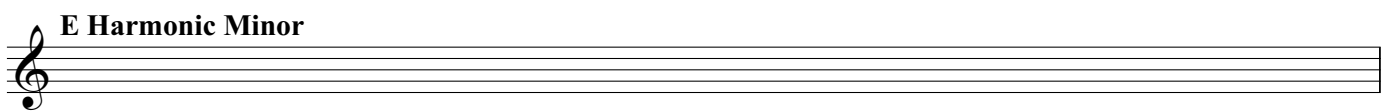
A musical staff in treble clef for the D Harmonic Minor scale, shown as an empty staff with a treble clef.

**D# Harmonic Minor** | **Eb Harmonic Minor**



Two musical staves in treble clef. The first staff is for D# Harmonic Minor and the second is for Eb Harmonic Minor. Both scales are shown as empty staves with a treble clef and a bar line between them.

**E Harmonic Minor**



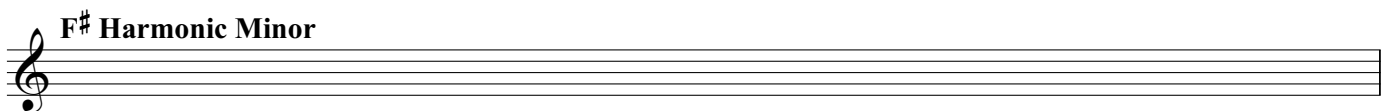
A musical staff in treble clef for the E Harmonic Minor scale, shown as an empty staff with a treble clef.

**E# Harmonic Minor** | **F Harmonic Minor**



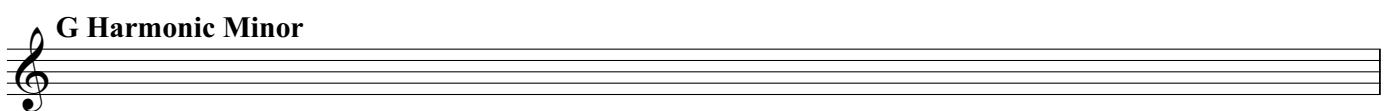
Two musical staves in treble clef. The first staff is for E# Harmonic Minor and the second is for F Harmonic Minor. Both scales are shown as empty staves with a treble clef and a bar line between them.

**F# Harmonic Minor**



A musical staff in treble clef for the F# Harmonic Minor scale, shown as an empty staff with a treble clef.

**G Harmonic Minor**



A musical staff in treble clef for the G Harmonic Minor scale, shown as an empty staff with a treble clef.

**G# Harmonic Minor** | **Ab Harmonic Minor**



Two musical staves in treble clef. The first staff is for G# Harmonic Minor and the second is for Ab Harmonic Minor. Both scales are shown as empty staves with a treble clef and a bar line between them.

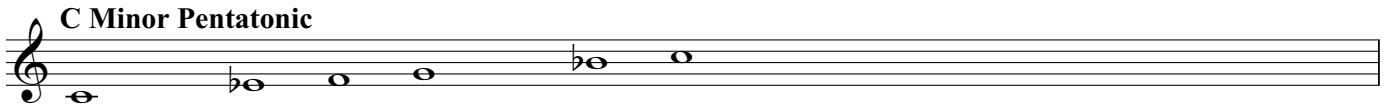




# Parallel Minor Pentatonic Scales

Remove the 2nd and 6th Scale Degrees of the Natural Minor Scale

**C Minor Pentatonic**



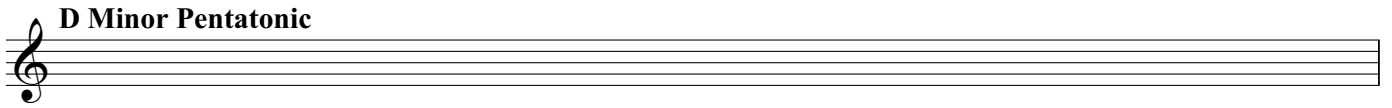
A single musical staff in treble clef showing the C minor pentatonic scale. The notes are C4 (quarter), D4 (quarter), E4 (quarter), F4 (quarter), G4 (quarter), and A4 (quarter).

**C# Minor Pentatonic** | **D<sup>b</sup> Minor Pentatonic**



Two musical staves in treble clef. The first staff shows the C# minor pentatonic scale (C#4, D5, E5, F#5, G5). The second staff shows the D-flat minor pentatonic scale (D4, E4, F4, G4, A4).

**D Minor Pentatonic**



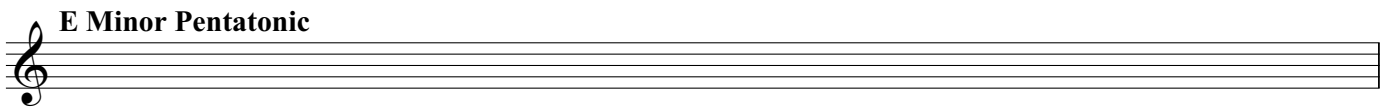
A single musical staff in treble clef showing the D minor pentatonic scale. The notes are D4 (quarter), E4 (quarter), F4 (quarter), G4 (quarter), and A4 (quarter).

**D# Minor Pentatonic** | **E<sup>b</sup> Minor Pentatonic**



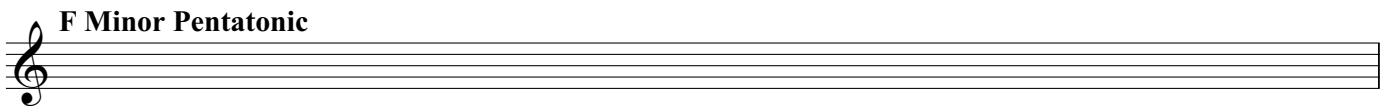
Two musical staves in treble clef. The first staff shows the D# minor pentatonic scale (D#4, E5, F#5, G#5, A5). The second staff shows the E-flat minor pentatonic scale (E4, F4, G4, A4, B4).

**E Minor Pentatonic**



A single musical staff in treble clef showing the E minor pentatonic scale. The notes are E4 (quarter), F4 (quarter), G4 (quarter), A4 (quarter), and B4 (quarter).

**F Minor Pentatonic**



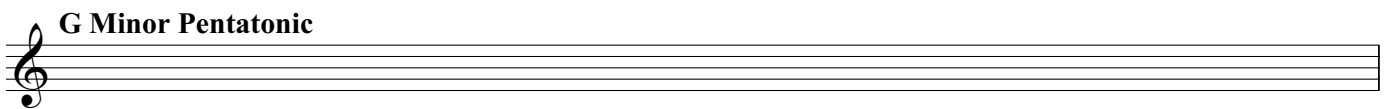
A single musical staff in treble clef showing the F minor pentatonic scale. The notes are F4 (quarter), G4 (quarter), A4 (quarter), B4 (quarter), and C5 (quarter).

**F# Minor Pentatonic** | **G<sup>b</sup> Minor Pentatonic**



Two musical staves in treble clef. The first staff shows the F# minor pentatonic scale (F#4, G5, A5, B5, C5). The second staff shows the G-flat minor pentatonic scale (G4, A4, B4, C5, D5).

**G Minor Pentatonic**



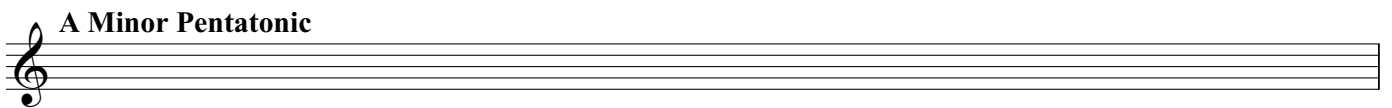
A single musical staff in treble clef showing the G minor pentatonic scale. The notes are G4 (quarter), A4 (quarter), B4 (quarter), C5 (quarter), and D5 (quarter).

**G# Minor Pentatonic** | **A<sup>b</sup> Minor Pentatonic**



Two musical staves in treble clef. The first staff shows the G# minor pentatonic scale (G#4, A5, B5, C5, D5). The second staff shows the A-flat minor pentatonic scale (A4, B4, C5, D5, E5).

**A Minor Pentatonic**



A single musical staff in treble clef showing the A minor pentatonic scale. The notes are A4 (quarter), B4 (quarter), C5 (quarter), D5 (quarter), and E5 (quarter).

**A# Minor Pentatonic** | **B<sup>b</sup> Minor Pentatonic**



Two musical staves in treble clef. The first staff shows the A# minor pentatonic scale (A#4, B5, C5, D5, E5). The second staff shows the B-flat minor pentatonic scale (B4, C5, D5, E5, F5).

**B Minor Pentatonic** | **C<sup>b</sup> Minor Pentatonic**



Two musical staves in treble clef. The first staff shows the B minor pentatonic scale (B4, C5, D5, E5, F5). The second staff shows the C-flat minor pentatonic scale (C4, D4, E4, F4, G4).

# Parallel Harmonic Minor Scales

Lower the 3rd and 6th Scale Degrees of a Major Scale (Natural Minor with a Raised 7th)

