

Drum Set Recital Song 1

1

Tim Girard

Verse

Musical notation for the first Verse section. The staff is in 2/4 time, indicated by a treble clef, a key signature of one sharp (F#), and a 2/4 time signature. The notation consists of a series of eighth notes on the treble staff, with a dynamic marking of *mp* (mezzo-piano) at the beginning. The notes are: G4, A4, B4, C5, B4, A4, G4, F#4. The first note is marked with an 'x' above it, indicating a snare drum hit. The section ends with a double bar line and repeat dots.

Chorus

Musical notation for the first Chorus section. The staff is in 2/4 time, indicated by a treble clef, a key signature of one sharp (F#), and a 2/4 time signature. The notation consists of a series of eighth notes on the treble staff, with a dynamic marking of *mf* (mezzo-forte) at the beginning. The notes are: G4, A4, B4, C5, B4, A4, G4, F#4. The first note is marked with an 'x' above it, indicating a snare drum hit. The section ends with a double bar line and repeat dots.

Verse

Musical notation for the second Verse section. The staff is in 2/4 time, indicated by a treble clef, a key signature of one sharp (F#), and a 2/4 time signature. The notation consists of a series of eighth notes on the treble staff, with a dynamic marking of *mp* (mezzo-piano) at the beginning. The notes are: G4, A4, B4, C5, B4, A4, G4, F#4. The first note is marked with an 'x' above it, indicating a snare drum hit. The section ends with a double bar line and repeat dots.

Chorus

Musical notation for the second Chorus section. The staff is in 2/4 time, indicated by a treble clef, a key signature of one sharp (F#), and a 2/4 time signature. The notation consists of a series of eighth notes on the treble staff, with a dynamic marking of *mf* (mezzo-forte) at the beginning. The notes are: G4, A4, B4, C5, B4, A4, G4, F#4. The first note is marked with an 'x' above it, indicating a snare drum hit. The section ends with a double bar line and repeat dots.

Bridge

Musical notation for the Bridge section. The staff is in 2/4 time, indicated by a treble clef, a key signature of one sharp (F#), and a 2/4 time signature. The notation consists of a series of eighth notes on the treble staff, with a dynamic marking of *f* (forte) at the beginning. The notes are: G4, A4, B4, C5, B4, A4, G4, F#4. The first note is marked with an 'x' above it, indicating a snare drum hit. The section ends with a double bar line and repeat dots.

Chorus

Musical notation for the third Chorus section. The staff is in 2/4 time, indicated by a treble clef, a key signature of one sharp (F#), and a 2/4 time signature. The notation consists of a series of eighth notes on the treble staff, with a dynamic marking of *mf* (mezzo-forte) at the beginning. The notes are: G4, A4, B4, C5, B4, A4, G4, F#4. The first note is marked with an 'x' above it, indicating a snare drum hit. The section ends with a double bar line and repeat dots.

Drum Set Recital Song 2

Tim Girard

Verse

Musical notation for the first Verse section. It features a drum set part on a single staff with a 4/4 time signature. The notation includes a key signature of one sharp (F#) and a common time signature of 4/4. The melody consists of eighth notes, and the bass line consists of quarter notes. The section is marked with a dynamic of *mp* (mezzo-piano).

Chorus

Musical notation for the first Chorus section. It features a drum set part on a single staff with a 4/4 time signature. The notation includes a key signature of one sharp (F#) and a common time signature of 4/4. The melody consists of eighth notes, and the bass line consists of quarter notes. The section is marked with a dynamic of *mf* (mezzo-forte).

Verse

Musical notation for the second Verse section. It features a drum set part on a single staff with a 4/4 time signature. The notation includes a key signature of one sharp (F#) and a common time signature of 4/4. The melody consists of eighth notes, and the bass line consists of quarter notes. The section is marked with a dynamic of *mp* (mezzo-piano).

Chorus

Musical notation for the second Chorus section. It features a drum set part on a single staff with a 4/4 time signature. The notation includes a key signature of one sharp (F#) and a common time signature of 4/4. The melody consists of eighth notes, and the bass line consists of quarter notes. The section is marked with a dynamic of *mf* (mezzo-forte).

Bridge

Musical notation for the Bridge section. It features a drum set part on a single staff with a 4/4 time signature. The notation includes a key signature of one sharp (F#) and a common time signature of 4/4. The melody consists of eighth notes, and the bass line consists of quarter notes. The section is marked with a dynamic of *f* (forte).

Chorus

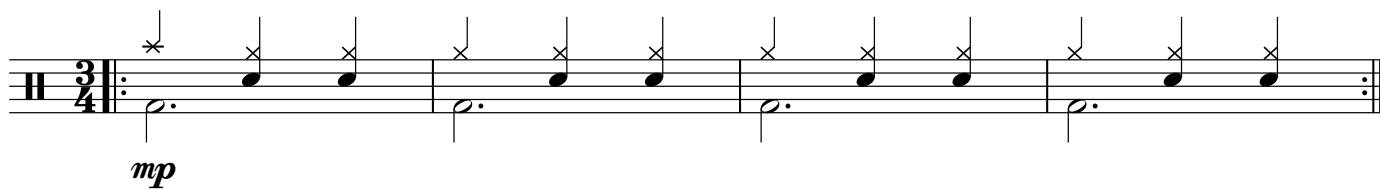
Musical notation for the third Chorus section. It features a drum set part on a single staff with a 4/4 time signature. The notation includes a key signature of one sharp (F#) and a common time signature of 4/4. The melody consists of eighth notes, and the bass line consists of quarter notes. The section is marked with a dynamic of *mf* (mezzo-forte).

Drum Set Recital Song 3

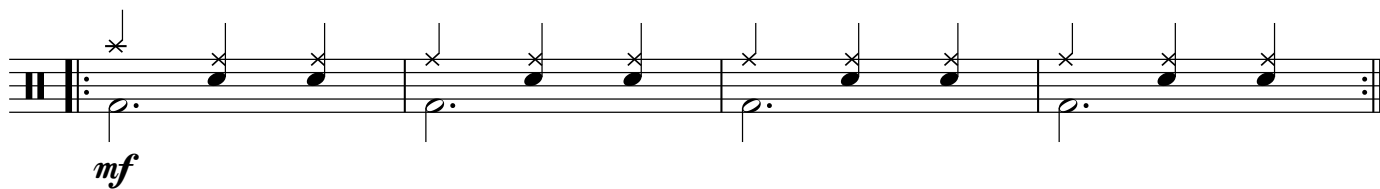
3

Tim Girard

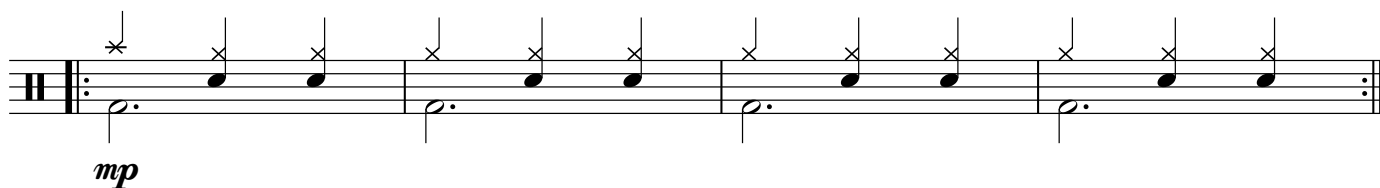
Verse



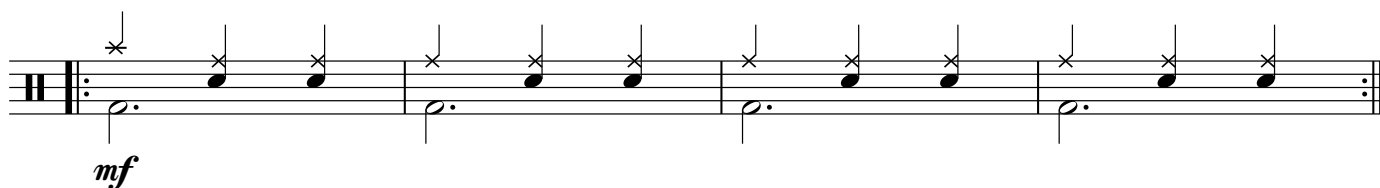
Chorus



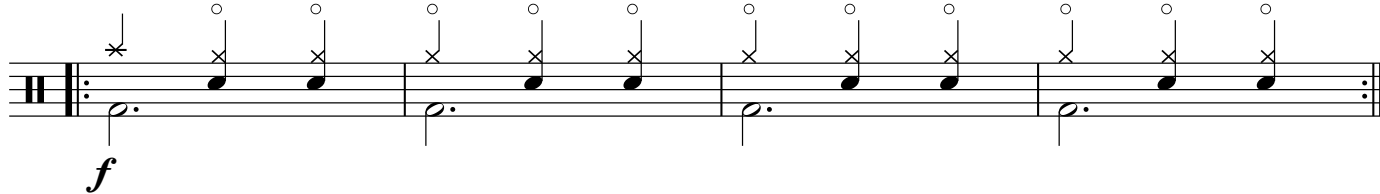
Verse



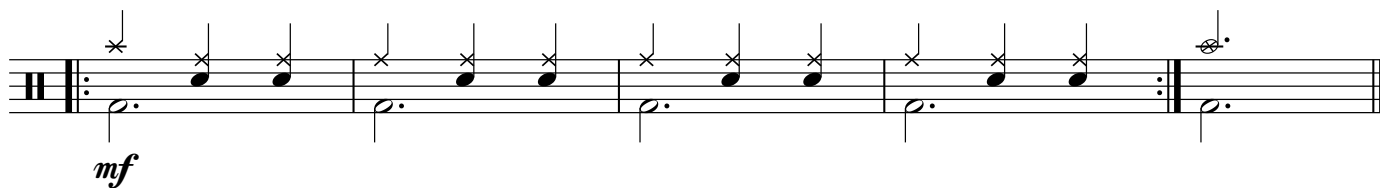
Chorus



Bridge



Chorus



Drum Set Recital Song 4

Tim Girard

Verse

Musical notation for the first Verse section. The staff is in 2/4 time, indicated by a '2' over a '4'. The key signature has one sharp (F#). The notation consists of a series of eighth notes on the upper staff, each marked with an 'x' to indicate a drum hit. The lower staff shows a bass line with quarter notes. The dynamic marking *mp* (mezzo-piano) is placed below the first note.

Chorus

Musical notation for the first Chorus section. The staff is in 2/4 time. The notation consists of a series of eighth notes on the upper staff, each marked with an 'x' to indicate a drum hit. The lower staff shows a bass line with quarter notes. The dynamic marking *mf* (mezzo-forte) is placed below the first note.

Verse

Musical notation for the second Verse section. The staff is in 2/4 time. The notation consists of a series of eighth notes on the upper staff, each marked with an 'x' to indicate a drum hit. The lower staff shows a bass line with quarter notes. The dynamic marking *mp* (mezzo-piano) is placed below the first note.

Chorus

Musical notation for the second Chorus section. The staff is in 2/4 time. The notation consists of a series of eighth notes on the upper staff, each marked with an 'x' to indicate a drum hit. The lower staff shows a bass line with quarter notes. The dynamic marking *mf* (mezzo-forte) is placed below the first note.

Bridge

Musical notation for the Bridge section. The staff is in 2/4 time. The notation consists of a series of eighth notes on the upper staff, each marked with an 'x' to indicate a drum hit. The lower staff shows a bass line with quarter notes. The dynamic marking *f* (forte) is placed below the first note.

Chorus

Musical notation for the third Chorus section. The staff is in 2/4 time. The notation consists of a series of eighth notes on the upper staff, each marked with an 'x' to indicate a drum hit. The lower staff shows a bass line with quarter notes. The dynamic marking *mf* (mezzo-forte) is placed below the first note.

Drum Set Recital Song 5

5

Tim Girard

Verse

Musical notation for the first Verse section. The staff is in 4/4 time, indicated by a '4' over and under the first '4'. The key signature has one sharp (F#). The notation consists of a series of eighth notes with 'x' marks above them, indicating a specific drum pattern. The first measure starts with an asterisk (*). The piece ends with a double bar line and repeat dots. The dynamic marking *mp* is below the first measure.

Chorus

Musical notation for the first Chorus section. The staff is in 4/4 time. The notation consists of a series of eighth notes with 'x' marks above them. The first measure starts with an asterisk (*). The piece ends with a double bar line and repeat dots. The dynamic marking *mf* is below the first measure.

Verse

Musical notation for the second Verse section. The staff is in 4/4 time. The notation consists of a series of eighth notes with 'x' marks above them. The first measure starts with an asterisk (*). The piece ends with a double bar line and repeat dots. The dynamic marking *mp* is below the first measure.

Chorus

Musical notation for the second Chorus section. The staff is in 4/4 time. The notation consists of a series of eighth notes with 'x' marks above them. The first measure starts with an asterisk (*). The piece ends with a double bar line and repeat dots. The dynamic marking *mf* is below the first measure.

Bridge

Musical notation for the Bridge section. The staff is in 4/4 time. The notation consists of eighth notes with 'o' marks above them, indicating a different drum pattern. The first measure starts with an asterisk (*). The piece ends with a double bar line and repeat dots. The dynamic marking *f* is below the first measure.

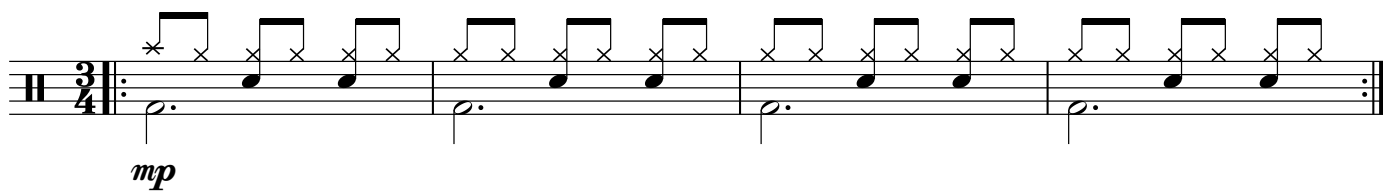
Chorus

Musical notation for the final Chorus section. The staff is in 4/4 time. The notation consists of eighth notes with 'x' marks above them. The first measure starts with an asterisk (*). The piece ends with a double bar line and repeat dots. The dynamic marking *mf* is below the first measure.

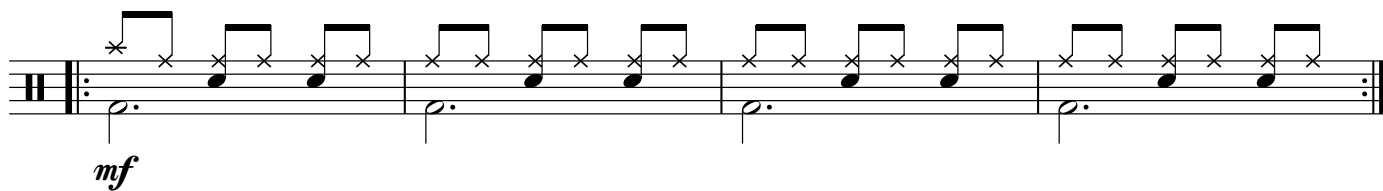
Drum Set Recital Song 6

Tim Girard

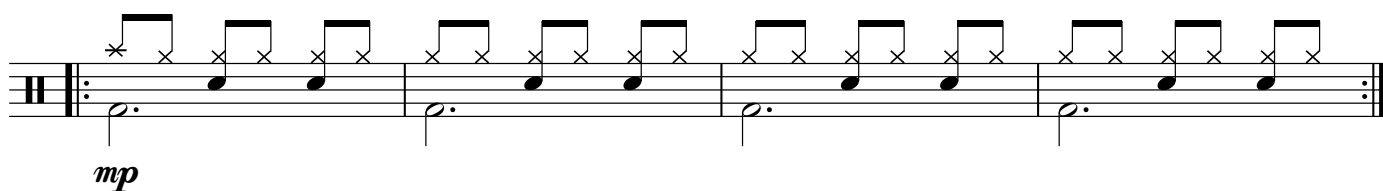
Verse



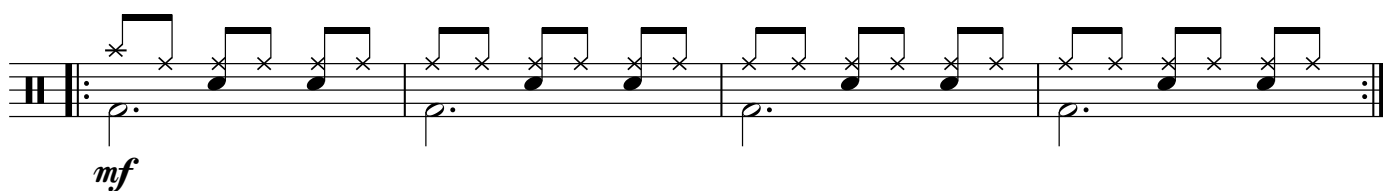
Chorus



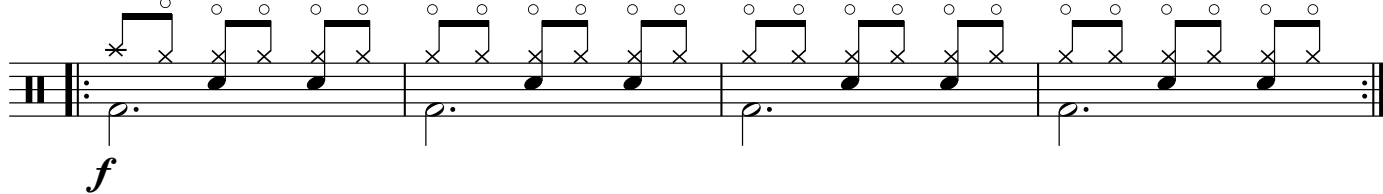
Verse



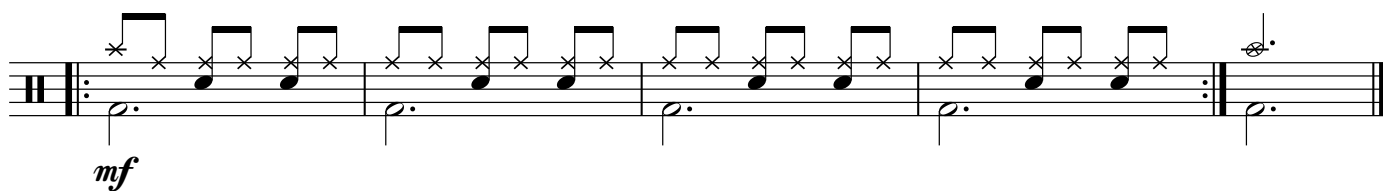
Chorus



Bridge



Chorus



Drum Set Recital Song 7

7

Tim Girard

Verse

Musical notation for the first Verse section. The staff is in 2/4 time, indicated by a treble clef and a 2/4 time signature. The notation consists of a series of eighth notes and quarter notes, with a dynamic marking of *mp* (mezzo-piano) at the beginning. The first measure starts with a double bar line and a repeat sign. The notation ends with a double bar line and a repeat sign.

Chorus

Musical notation for the first Chorus section. The staff is in 2/4 time, indicated by a treble clef and a 2/4 time signature. The notation consists of a series of eighth notes and quarter notes, with a dynamic marking of *mf* (mezzo-forte) at the beginning. The first measure starts with a double bar line and a repeat sign. The notation ends with a double bar line and a repeat sign.

Verse

Musical notation for the second Verse section. The staff is in 2/4 time, indicated by a treble clef and a 2/4 time signature. The notation consists of a series of eighth notes and quarter notes, with a dynamic marking of *mp* (mezzo-piano) at the beginning. The first measure starts with a double bar line and a repeat sign. The notation ends with a double bar line and a repeat sign.

Chorus

Musical notation for the second Chorus section. The staff is in 2/4 time, indicated by a treble clef and a 2/4 time signature. The notation consists of a series of eighth notes and quarter notes, with a dynamic marking of *mf* (mezzo-forte) at the beginning. The first measure starts with a double bar line and a repeat sign. The notation ends with a double bar line and a repeat sign.

Bridge

Musical notation for the Bridge section. The staff is in 2/4 time, indicated by a treble clef and a 2/4 time signature. The notation consists of a series of eighth notes and quarter notes, with a dynamic marking of *f* (forte) at the beginning. The first measure starts with a double bar line and a repeat sign. The notation ends with a double bar line and a repeat sign.

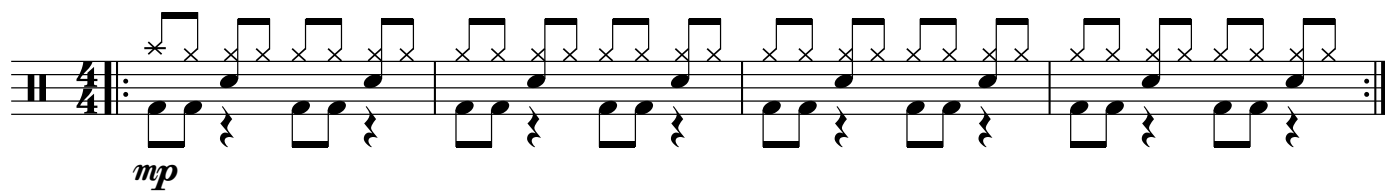
Chorus

Musical notation for the third Chorus section. The staff is in 2/4 time, indicated by a treble clef and a 2/4 time signature. The notation consists of a series of eighth notes and quarter notes, with a dynamic marking of *mf* (mezzo-forte) at the beginning. The first measure starts with a double bar line and a repeat sign. The notation ends with a double bar line and a repeat sign.

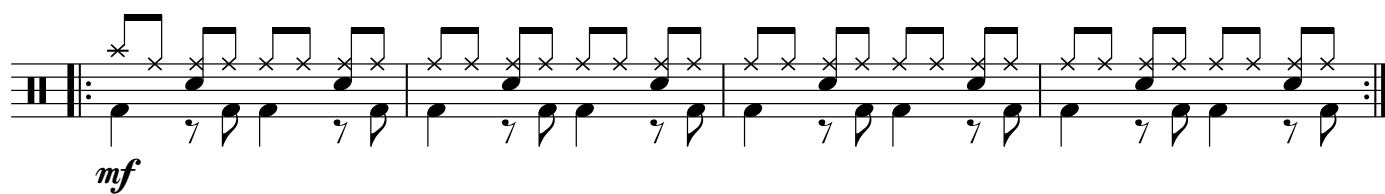
Drum Set Recital Song 8

Tim Girard

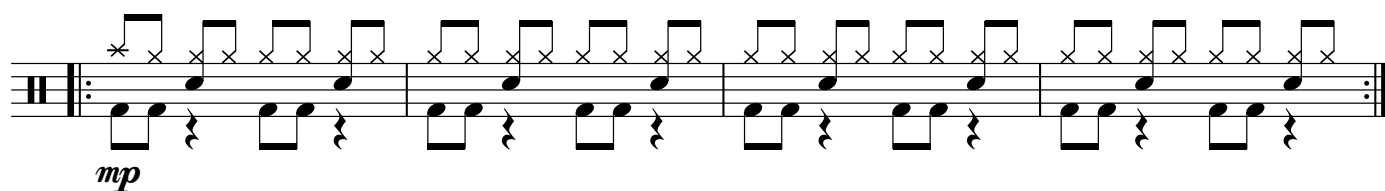
Verse



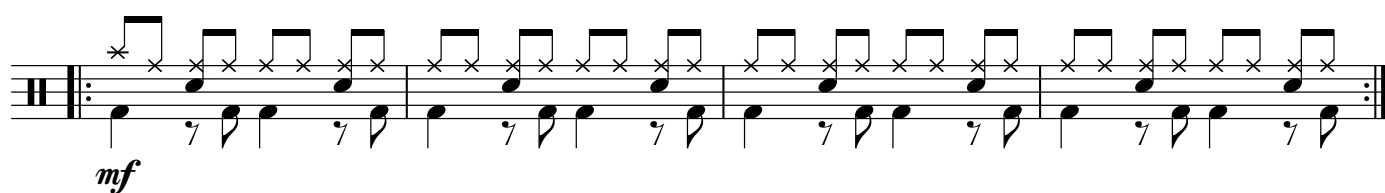
Chorus



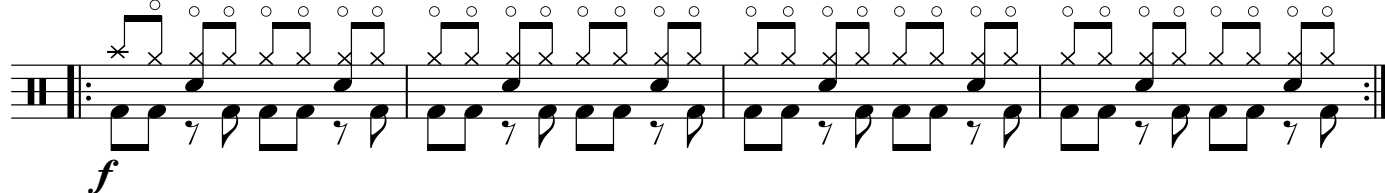
Verse



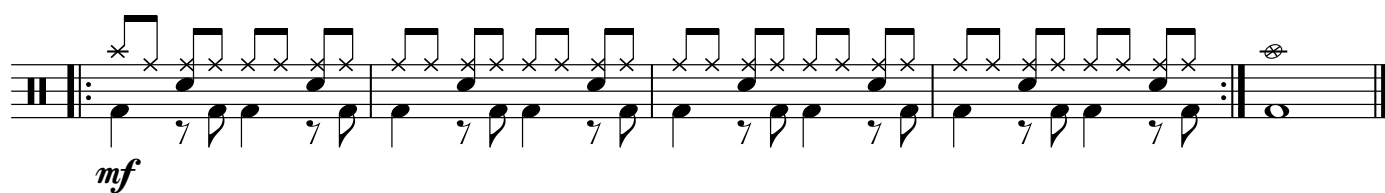
Chorus



Bridge



Chorus

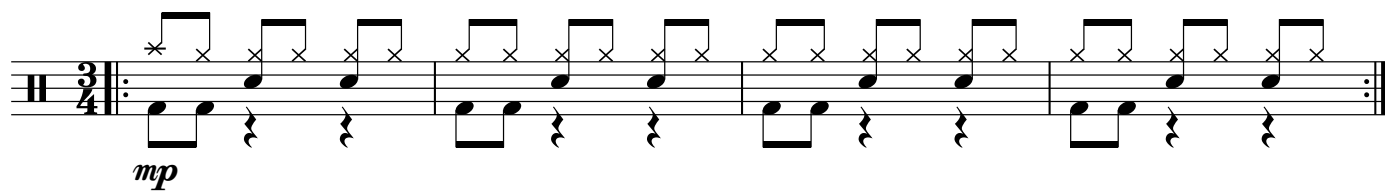


Drum Set Recital Song 9

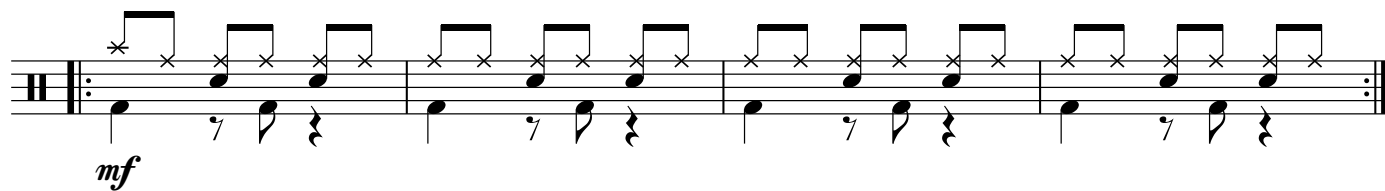
9

Tim Girard

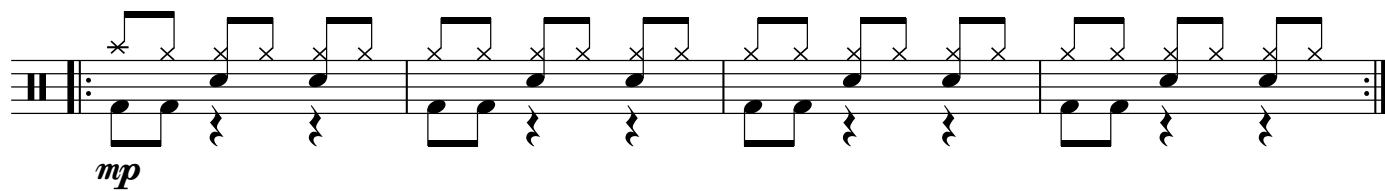
Verse



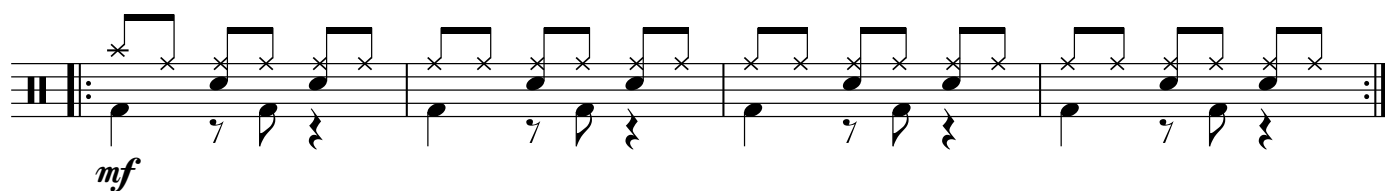
Chorus



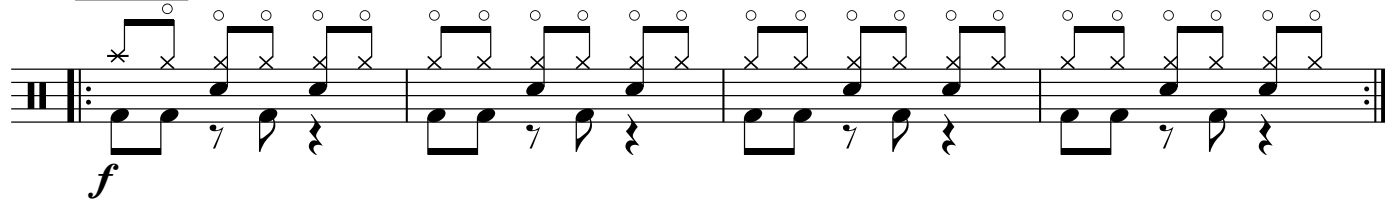
Verse



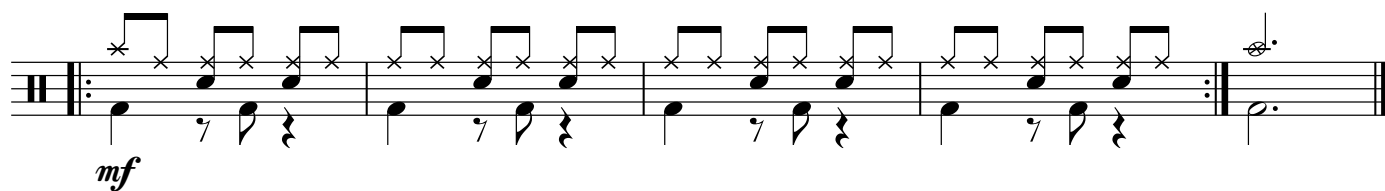
Chorus



Bridge



Chorus



Drum Set Recital Song 10

Tim Girard

Verse

Musical notation for the first Verse section. The staff is in 2/4 time, indicated by a treble clef and a 2/4 time signature. The notation consists of a series of eighth notes and quarter notes, with some notes marked with an 'x' to indicate a specific drum sound. The dynamics are marked *mp* (mezzo-piano).

Chorus

Musical notation for the first Chorus section. The staff is in 2/4 time, indicated by a treble clef and a 2/4 time signature. The notation consists of a series of eighth notes and quarter notes, with some notes marked with an 'x' to indicate a specific drum sound. The dynamics are marked *mf* (mezzo-forte).

Verse

Musical notation for the second Verse section. The staff is in 2/4 time, indicated by a treble clef and a 2/4 time signature. The notation consists of a series of eighth notes and quarter notes, with some notes marked with an 'x' to indicate a specific drum sound. The dynamics are marked *mp* (mezzo-piano).

Chorus

Musical notation for the second Chorus section. The staff is in 2/4 time, indicated by a treble clef and a 2/4 time signature. The notation consists of a series of eighth notes and quarter notes, with some notes marked with an 'x' to indicate a specific drum sound. The dynamics are marked *mf* (mezzo-forte).

Bridge

Musical notation for the Bridge section. The staff is in 2/4 time, indicated by a treble clef and a 2/4 time signature. The notation consists of a series of eighth notes and quarter notes, with some notes marked with an 'x' to indicate a specific drum sound. The dynamics are marked *f* (forte).

Chorus

Musical notation for the third Chorus section. The staff is in 2/4 time, indicated by a treble clef and a 2/4 time signature. The notation consists of a series of eighth notes and quarter notes, with some notes marked with an 'x' to indicate a specific drum sound. The dynamics are marked *mf* (mezzo-forte).

Drum Set Recital Song 11

11

Tim Girard

Verse

Musical notation for the first Verse section. The staff is in 4/4 time, marked with a treble clef and a key signature of one sharp (F#). The notation consists of a series of eighth notes and quarter notes, with a dynamic marking of *mp* (mezzo-piano) at the beginning. The first measure starts with a double bar line and a repeat sign. The notation ends with a double bar line and repeat dots.

Chorus

Musical notation for the first Chorus section. The staff is in 4/4 time, marked with a treble clef and a key signature of one sharp (F#). The notation consists of a series of eighth notes and quarter notes, with a dynamic marking of *mf* (mezzo-forte) at the beginning. The first measure starts with a double bar line and a repeat sign. The notation ends with a double bar line and repeat dots.

Verse

Musical notation for the second Verse section. The staff is in 4/4 time, marked with a treble clef and a key signature of one sharp (F#). The notation consists of a series of eighth notes and quarter notes, with a dynamic marking of *mp* (mezzo-piano) at the beginning. The first measure starts with a double bar line and a repeat sign. The notation ends with a double bar line and repeat dots.

Chorus

Musical notation for the second Chorus section. The staff is in 4/4 time, marked with a treble clef and a key signature of one sharp (F#). The notation consists of a series of eighth notes and quarter notes, with a dynamic marking of *mf* (mezzo-forte) at the beginning. The first measure starts with a double bar line and a repeat sign. The notation ends with a double bar line and repeat dots.

Bridge

Musical notation for the Bridge section. The staff is in 4/4 time, marked with a treble clef and a key signature of one sharp (F#). The notation consists of a series of eighth notes and quarter notes, with a dynamic marking of *f* (forte) at the beginning. The first measure starts with a double bar line and a repeat sign. The notation ends with a double bar line and repeat dots.

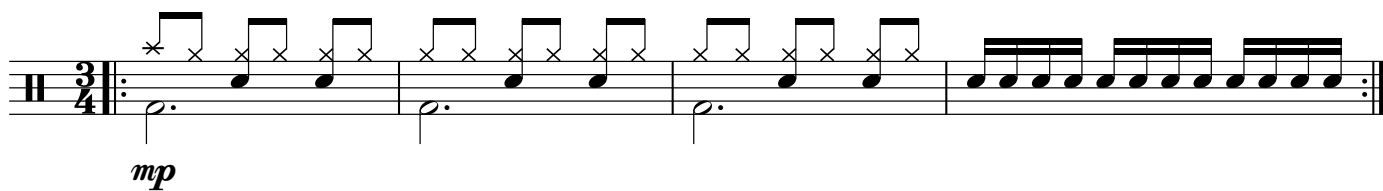
Chorus

Musical notation for the third Chorus section. The staff is in 4/4 time, marked with a treble clef and a key signature of one sharp (F#). The notation consists of a series of eighth notes and quarter notes, with a dynamic marking of *mf* (mezzo-forte) at the beginning. The first measure starts with a double bar line and a repeat sign. The notation ends with a double bar line and repeat dots.

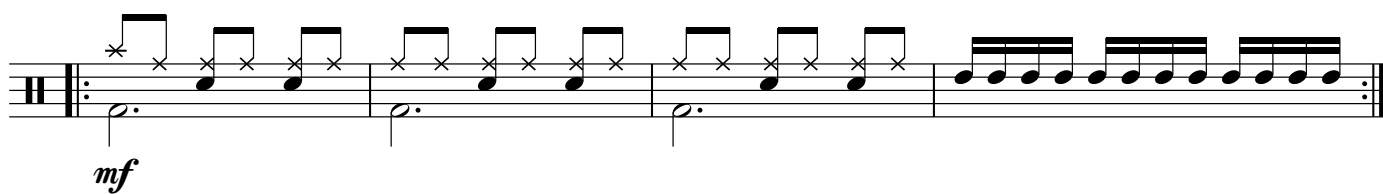
Drum Set Recital Song 12

Tim Girard

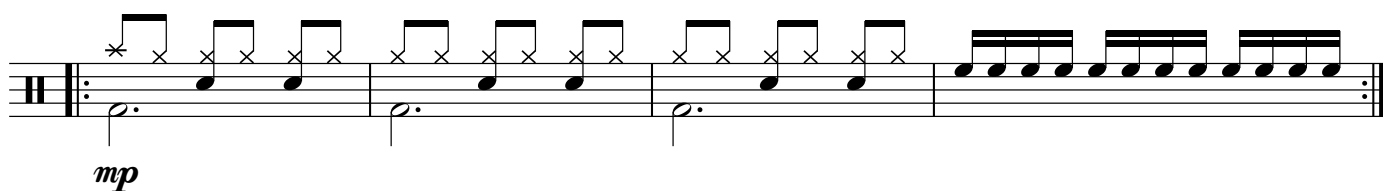
Verse



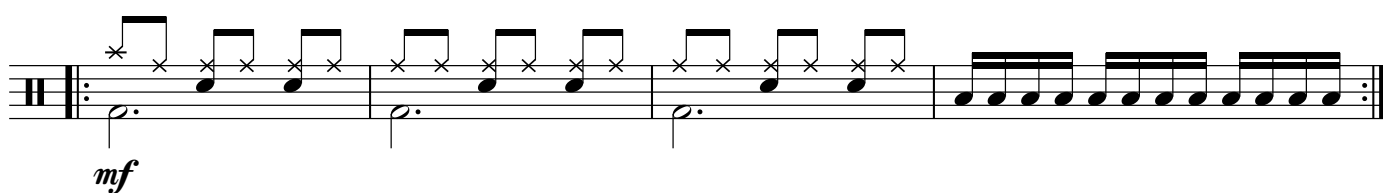
Chorus



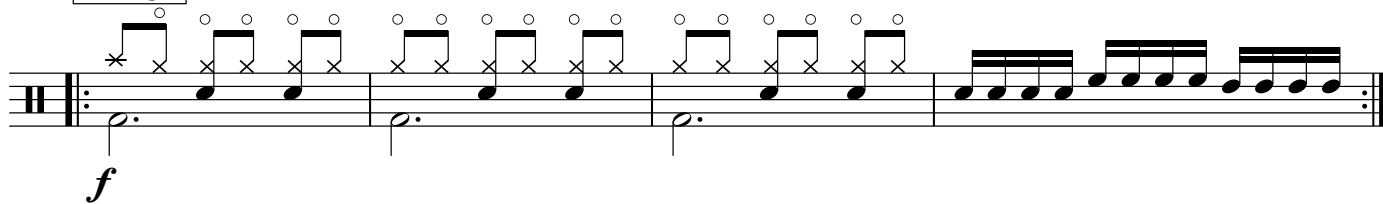
Verse



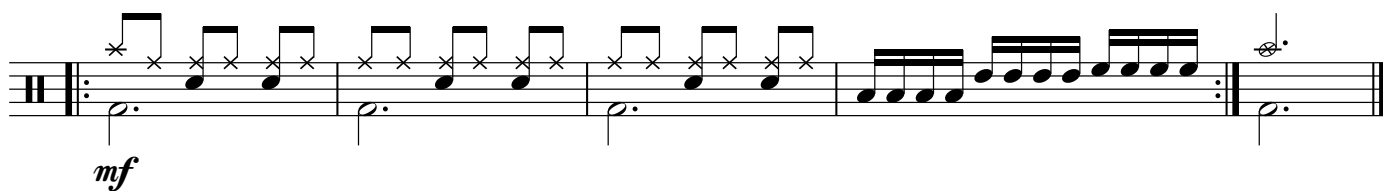
Chorus



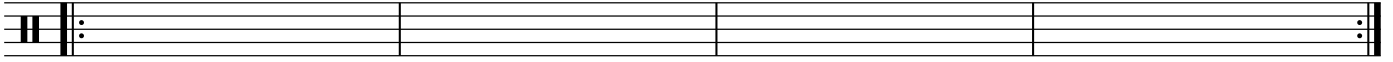
Bridge



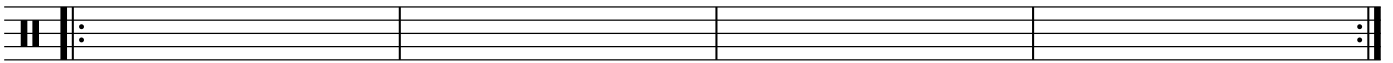
Chorus



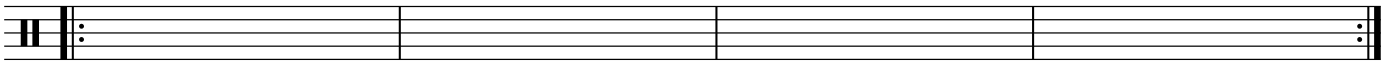
Verse



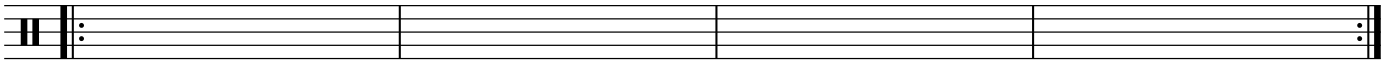
Chorus



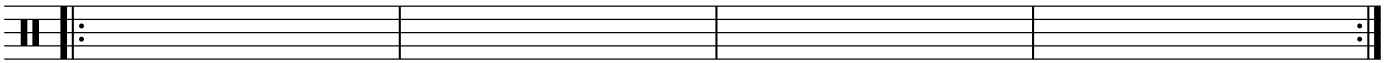
Verse



Chorus



Bridge



Chorus

