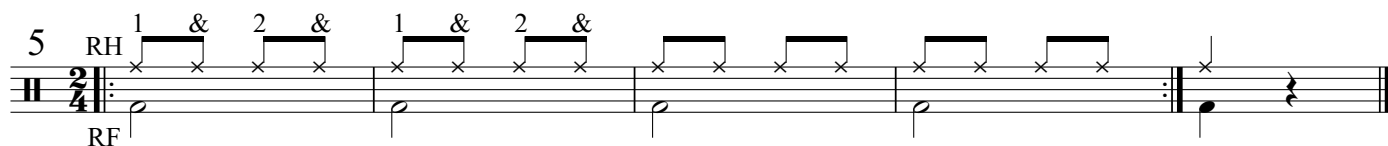
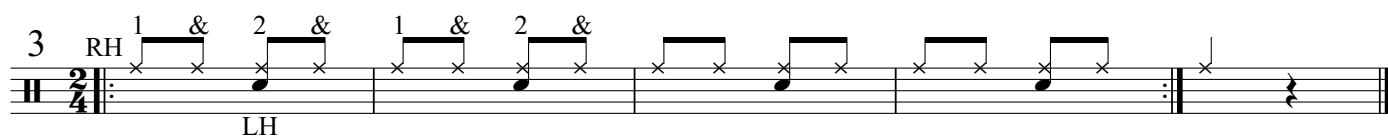
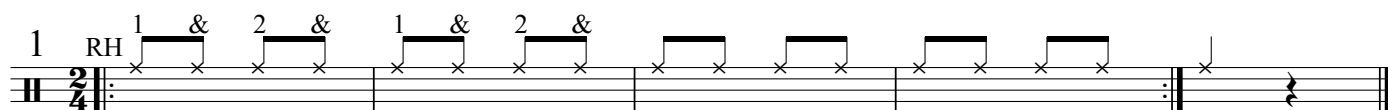


Level 2: 8th Notes in 2/4, 4/4, and 3/4 Time

8th Notes on the Ride Cymbal in 2/4 Time.

COUNT OUT LOUD



8th Notes on the Ride Cymbal in 4/4 Time (Snare Drum on Beats 2 and 4).

COUNT OUT LOUD

1 RH 1 & 2 & 3 & 4 & 1 & 2 & 3 & 4 &

2 1 & 2 & 3 & 4 & 1 & 2 & 3 & 4 &

LH

3 RH 1 & 2 & 3 & 4 & 1 & 2 & 3 & 4 &

LH

4 1 & 2 & 3 & 4 & 1 & 2 & 3 & 4 &

RF

5 RH 1 & 2 & 3 & 4 & 1 & 2 & 3 & 4 &

RF

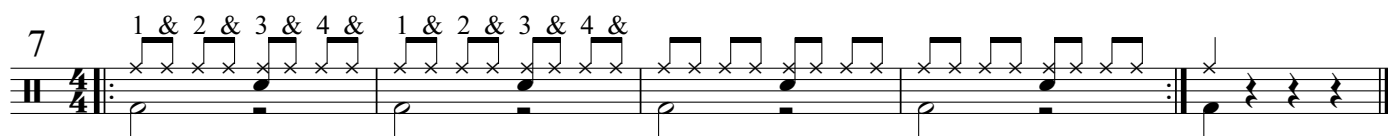
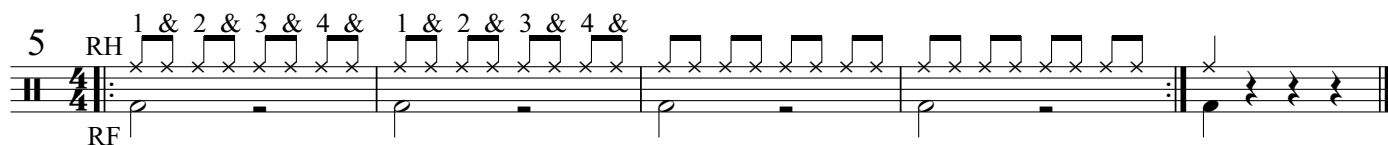
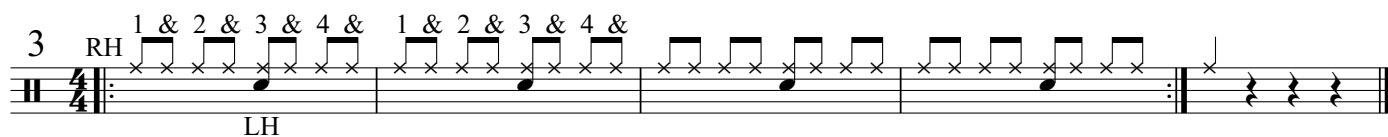
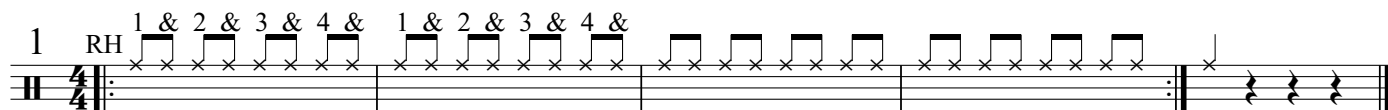
6 1 & 2 & 3 & 4 & 1 & 2 & 3 & 4 &

RF LH

7 1 & 2 & 3 & 4 & 1 & 2 & 3 & 4 &

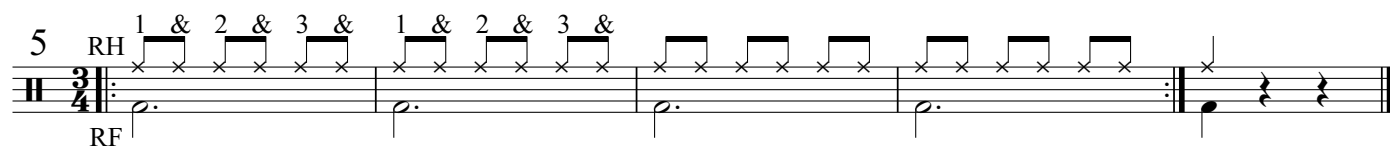
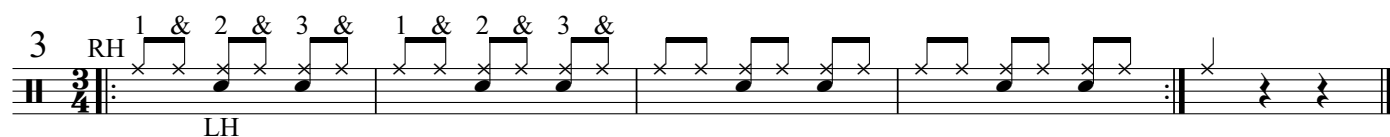
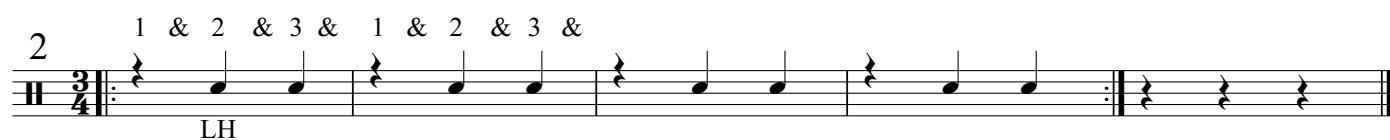
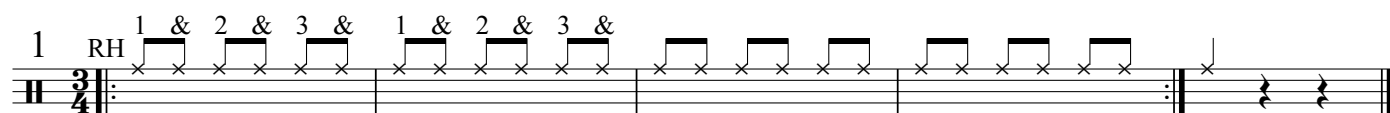
8th Notes on the Ride Cymbal in 4/4 Time (Snare Drum on Beat 3).

COUNT OUT LOUD



8th Notes on the Ride Cymbal in 3/4 Time.

COUNT OUT LOUD



The image displays a musical score for the song "The Rose Tree". It consists of two systems of music. The first system includes a piano accompaniment and a vocal melody. The piano part is written in 4/4 time, starting with a treble clef and a key signature of one sharp (F#). The melody is written in a single staff with a treble clef. The second system continues the piano accompaniment and the vocal melody. The piano part is written in 4/4 time, starting with a treble clef and a key signature of one sharp (F#). The melody is written in a single staff with a treble clef. The score includes dynamic markings such as *mp* (mezzo-piano) and *mf* (mezzo-forte). The tempo is marked as "Moderato". The score is for a piano and voice.