

Level 1: Quarter Notes in 2/4, 4/4, and 3/4 Time

1

KEY TO SYMBOLS USED IN DRUM SET MUSIC

Notice that we use an "X" or **diamond** for the **cymbals**, but a **regular notehead** for the **drums**. This is so it is easier to tell them apart.

Crash Cymbal Closed Hi-Hat Open Hi-Hat Ride Cymbal Ride Bell

High Tom Medium Tom Snare Drum Floor Tom

Bass Drum (Right Foot) Hi-Hat (Left Foot)

Notice that the stems go **up** for the instruments that your **hands** play and **down** for what your **feet** play. This *won't* happen *all* of the time, but it *will* happen *most* of the time.

Quarter Notes on the Ride Cymbal in 2/4 Time.

COUNT OUT LOUD

1 RH 1 2 1 2

2 LH 1 2 1 2

3 LH 1 2 1 2

4 RF 1 2 1 2

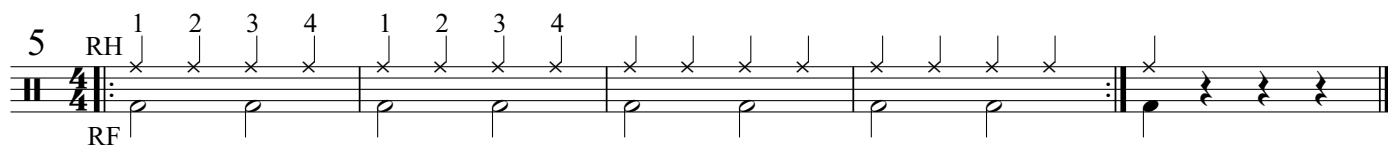
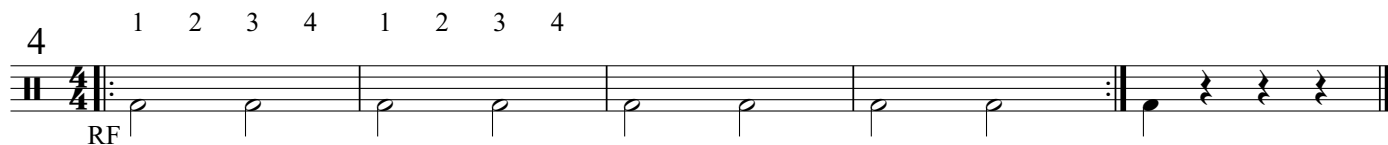
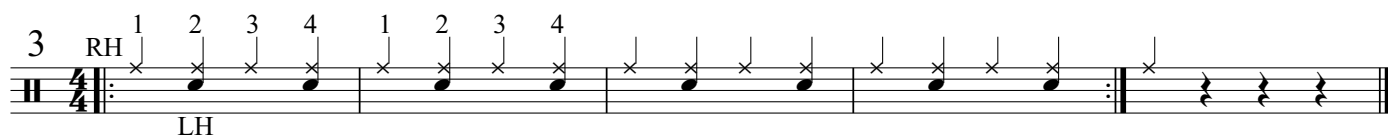
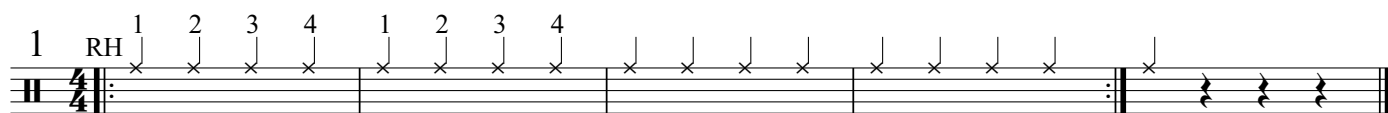
5 RF 1 2 1 2

6 RF LH 1 2 1 2

7 1 2 1 2

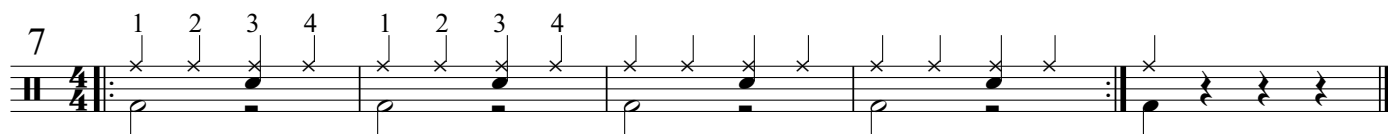
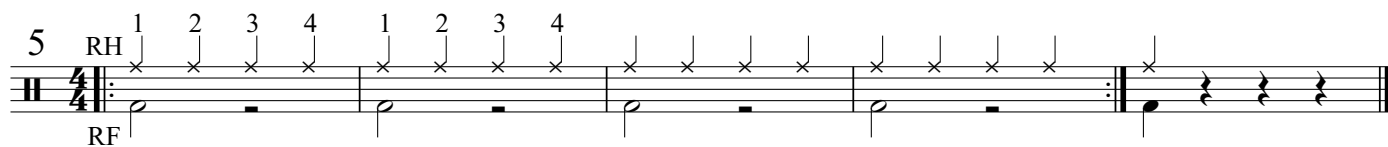
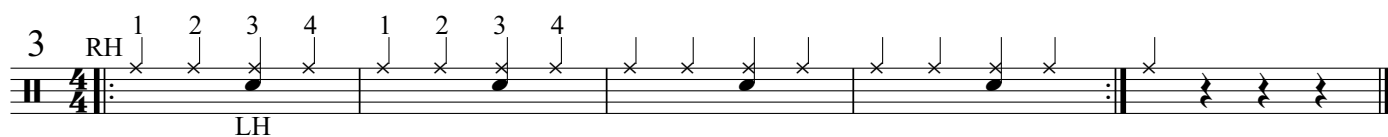
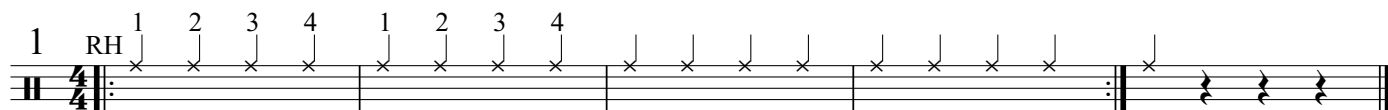
Quarter Notes on the Ride Cymbal in 4/4 Time (Snare Drum on Beats 2 and 4).

COUNT OUT LOUD



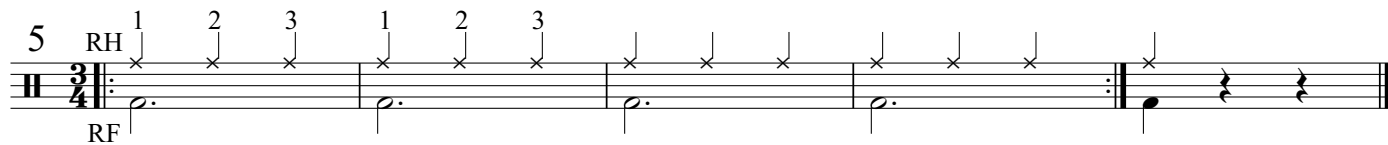
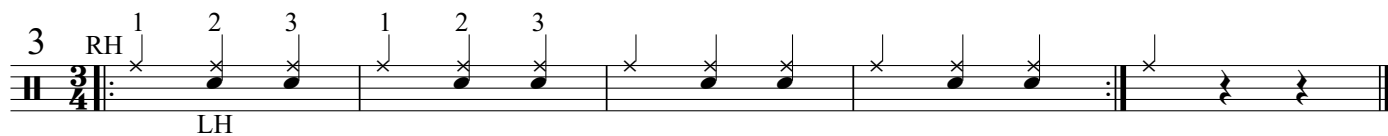
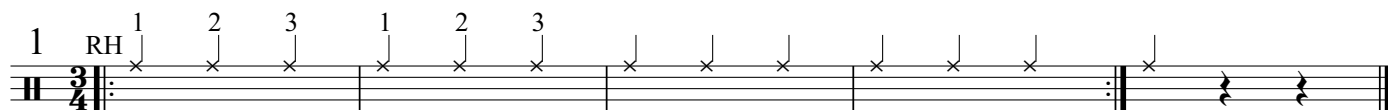
Quarter Notes on the Ride Cymbal in 4/4 Time (Snare Drum on Beat 3).

COUNT OUT LOUD



Quarter Notes on the Ride Cymbal in 3/4 Time.

COUNT OUT LOUD



12-Bar Blues

COUNT OUT LOUD

