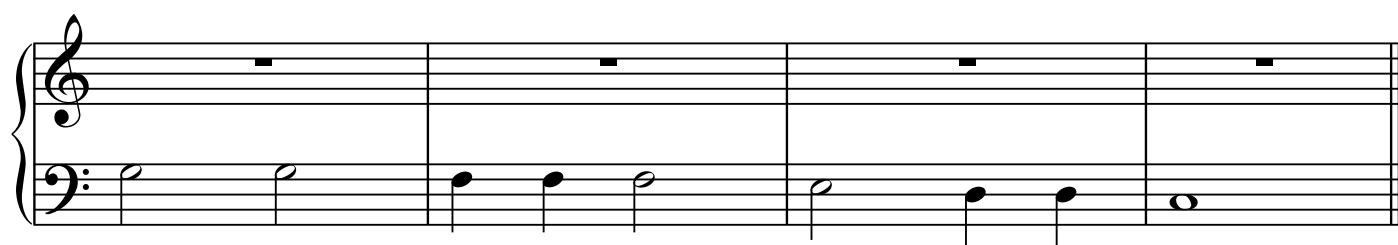
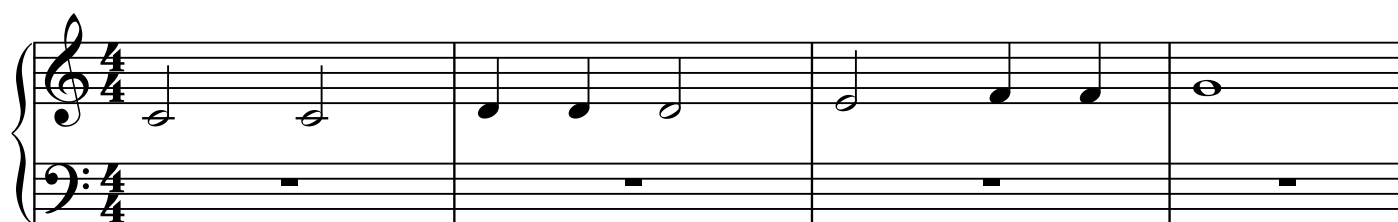
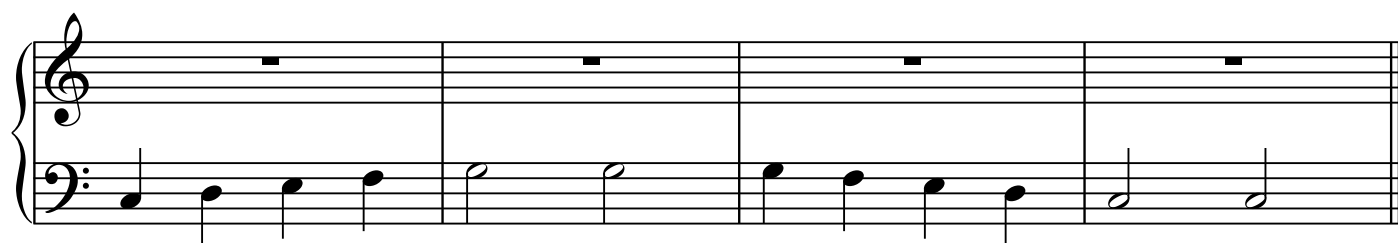


Supplemental Piano Exercises Level 8

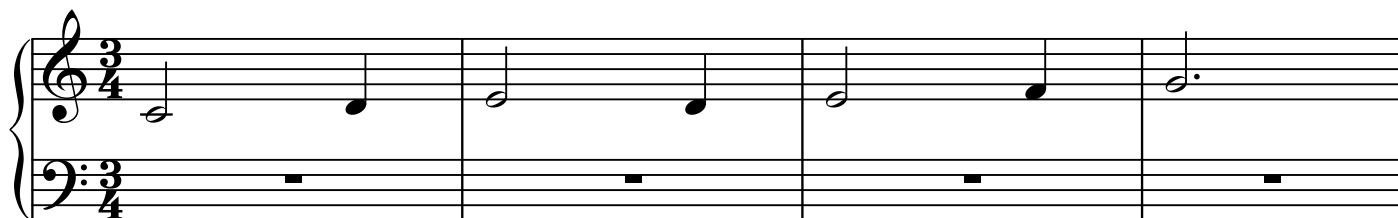
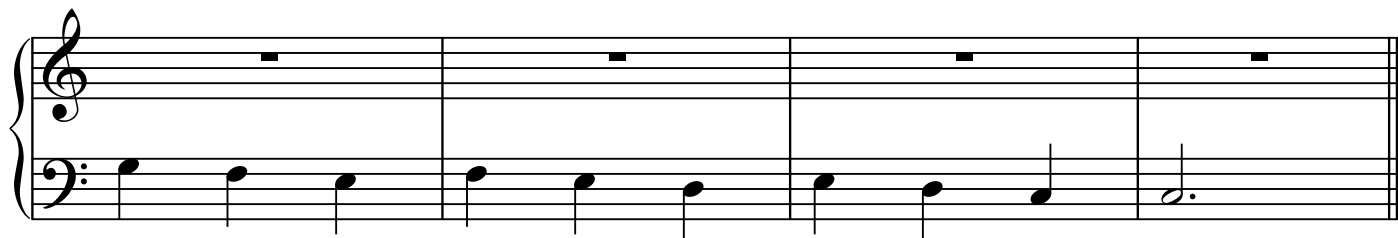
The Grand Staff in C Position and Slurs

Tim Girard

The Grand Staff (Right Hand then Left Hand)



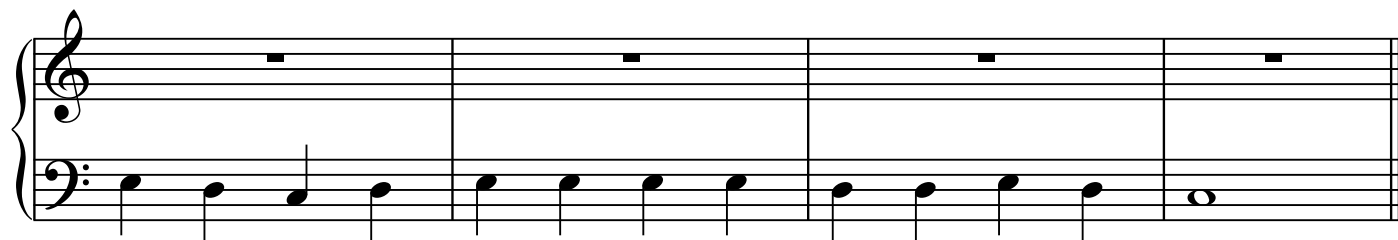




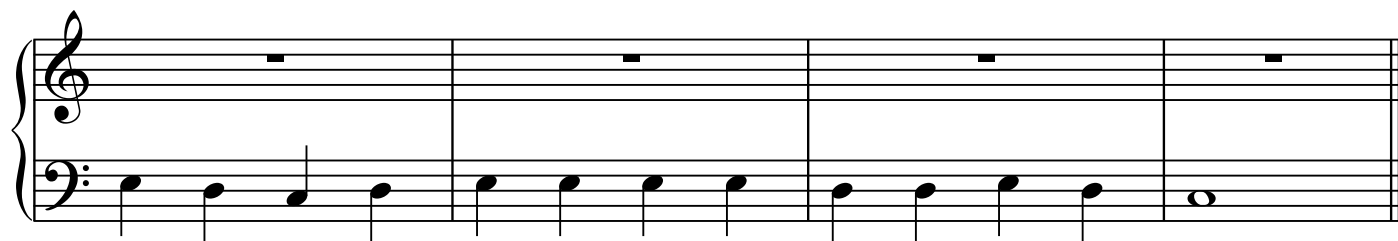
Hot Cross Buns in C Major



Mary Had a Little Lamb/Merrily We Roll Along in C Major



Mary Had a Little Lamb/Merrily We Roll Along (with high note) in C Major

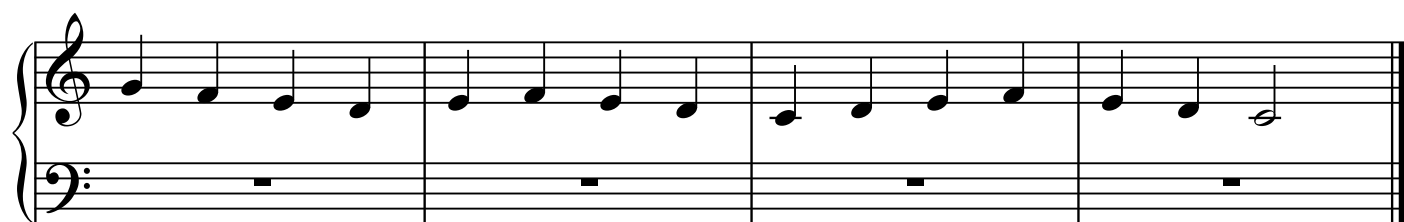


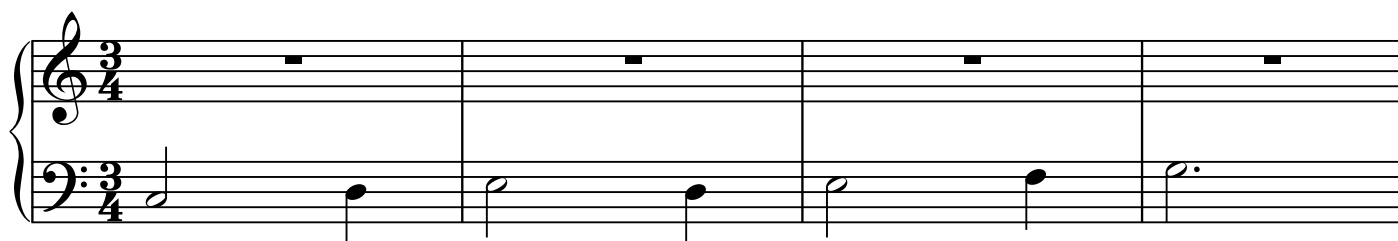
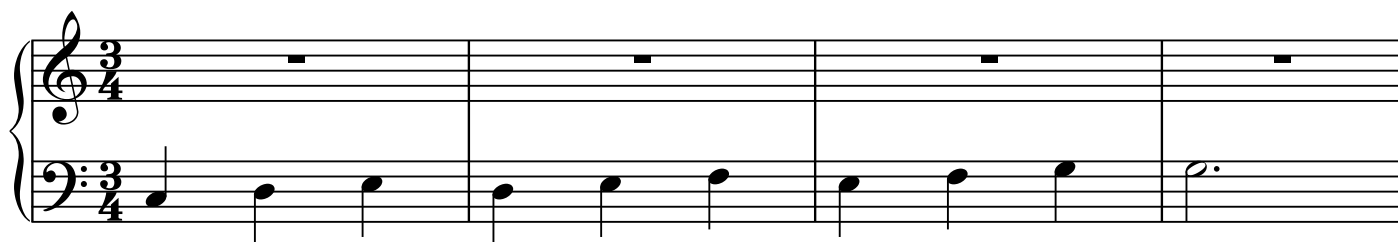
Ode to Joy in C Major



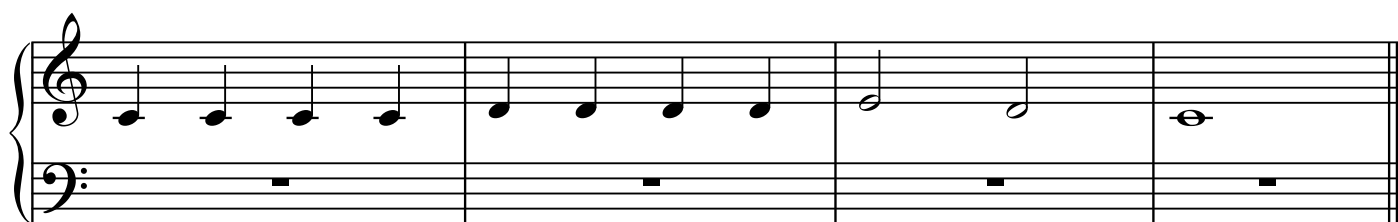
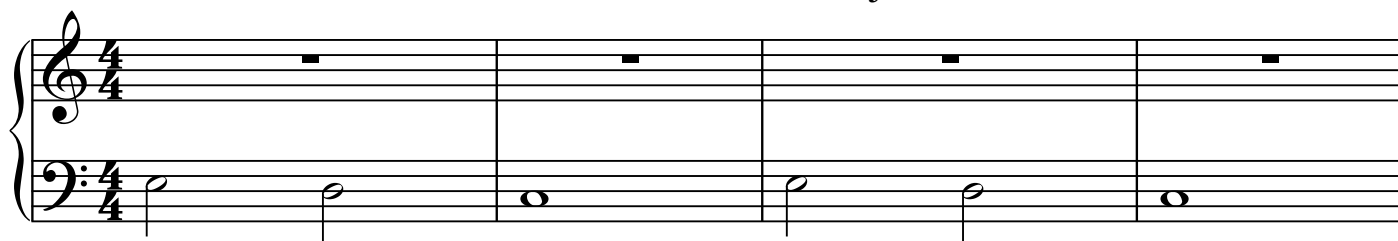
The Grand Staff (Left Hand then Right Hand)







Hot Cross Buns in C Major



Mary Had a Little Lamb/Merrily We Roll Along in C Major

Two systems of musical notation for the piece 'Mary Had a Little Lamb/Merrily We Roll Along' in C Major, 4/4 time. The first system shows the first four measures: the right hand has whole rests, and the left hand plays a descending eighth-note scale (C4-B3-A3-G3-F3-E3-D3) followed by a half note (C3). The second system shows the next four measures: the right hand plays an ascending eighth-note scale (D4-E4-F4-G4-A4-B4-C5) followed by a half note (B4), while the left hand has whole rests. The piece concludes with a double bar line.

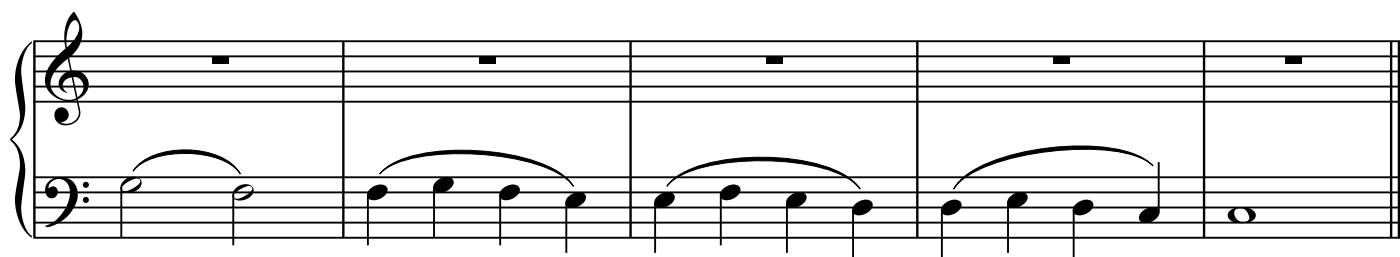
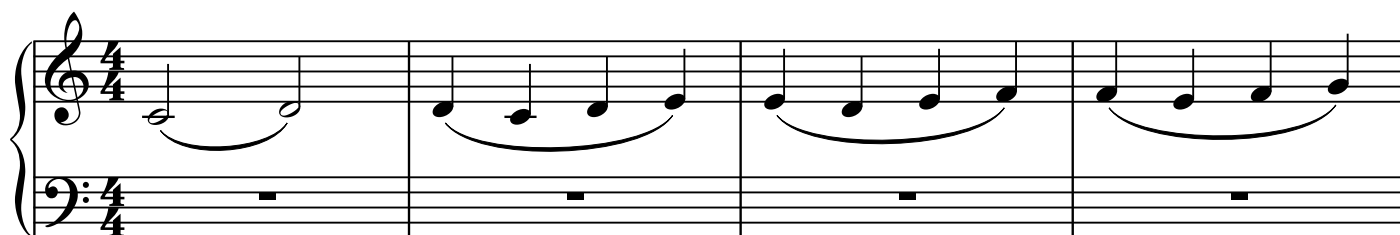
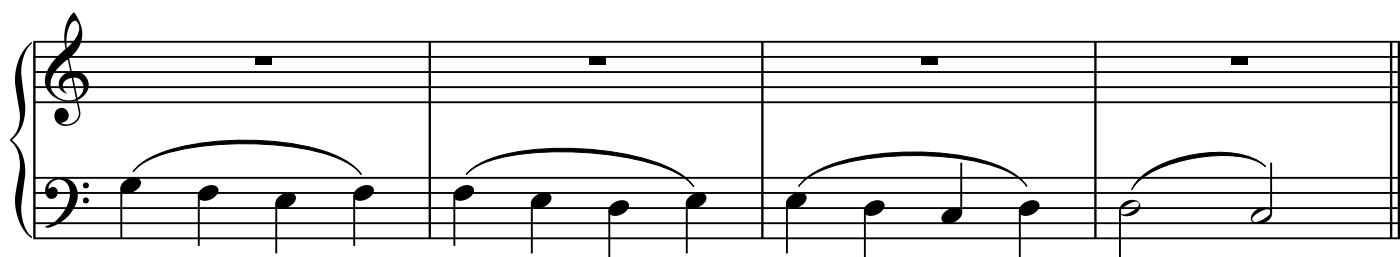
Mary Had a Little Lamb/Merrily We Roll Along (with high note) in C Major

Two systems of musical notation for the piece 'Mary Had a Little Lamb/Merrily We Roll Along (with high note)' in C Major, 4/4 time. The first system is identical to the first system of the previous piece. The second system shows the next four measures: the right hand plays an ascending eighth-note scale (D4-E4-F4-G4-A4-B4-C5) followed by a half note (B4), while the left hand has whole rests. The piece concludes with a double bar line.

Ode to Joy in C Major

Two systems of musical notation for the piece 'Ode to Joy' in C Major, 4/4 time. The first system shows the first four measures: the right hand has whole rests, and the left hand plays a descending eighth-note scale (C4-B3-A3-G3-F3-E3-D3) followed by a half note (C3). The second system shows the next four measures: the right hand plays an ascending eighth-note scale (D4-E4-F4-G4-A4-B4-C5) followed by a half note (B4), while the left hand has whole rests. The piece concludes with a double bar line.

Slurs (Right Hand then Left Hand)



Slurs (Left Hand then Right Hand)

